

# Impact of the Global Economic Crises on Civil Society Organizations

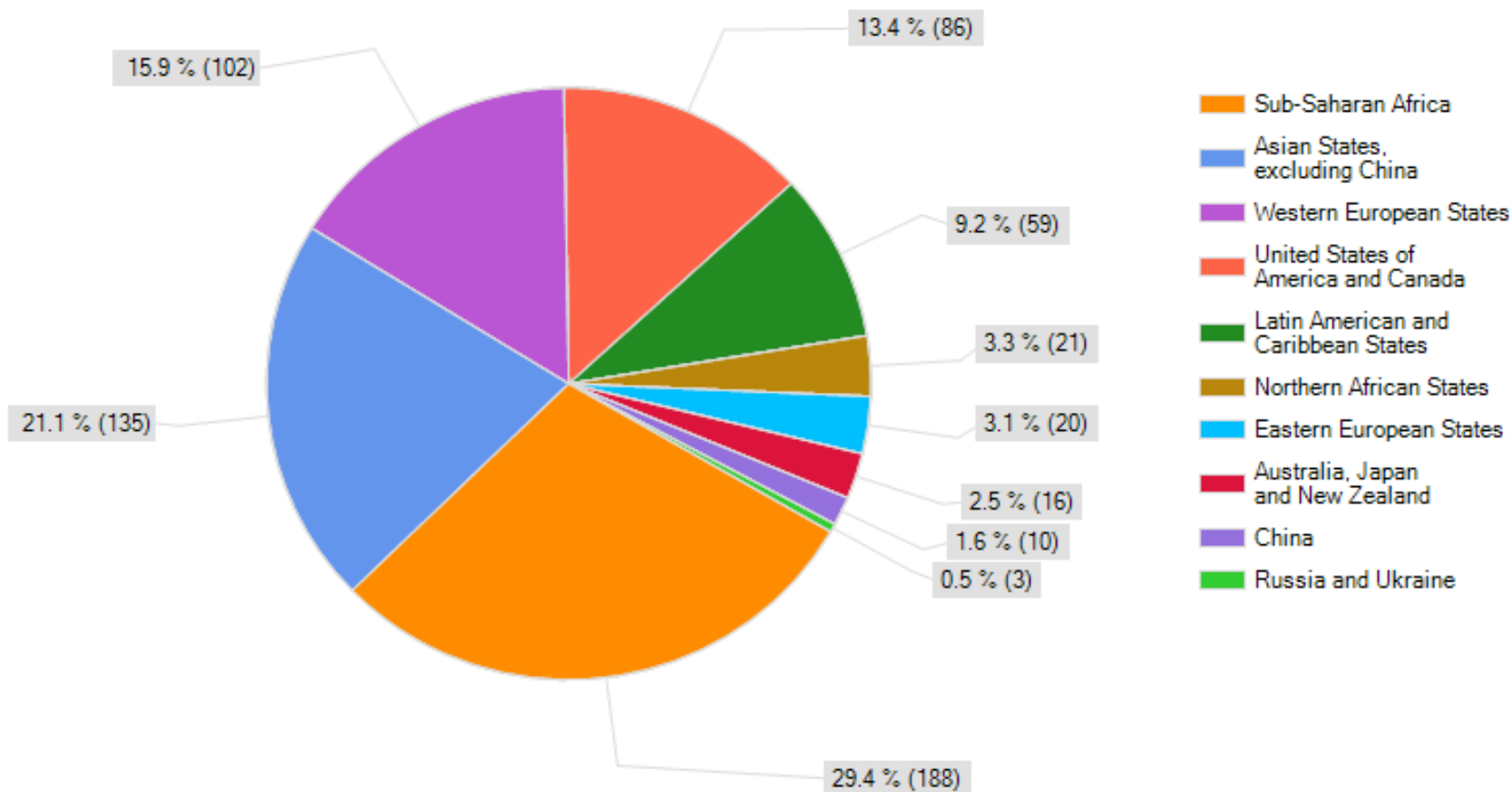
**A Survey based on responses  
from 640 CSOs worldwide**

# This survey was undertaken

under the guidance of a CSO Steering Committee, which included two members of the NGO Committee for Social Development:

- Marianists International,
- the Sisters of Charity Federation and
- the Friedrich Ebert Foundation.

Chart Question 3: Geographical balance of responses



### Chart Question 4: Type of organizations

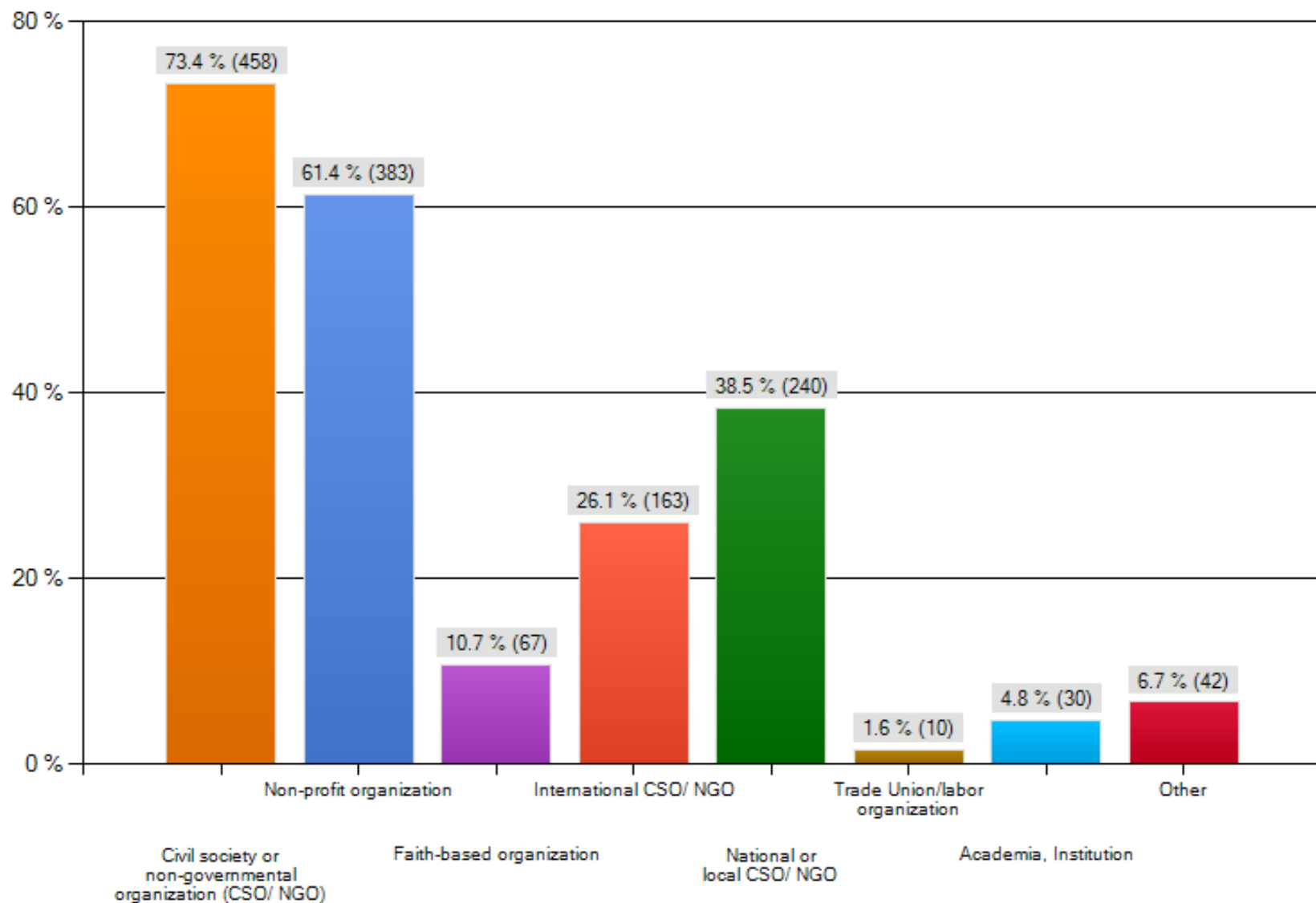
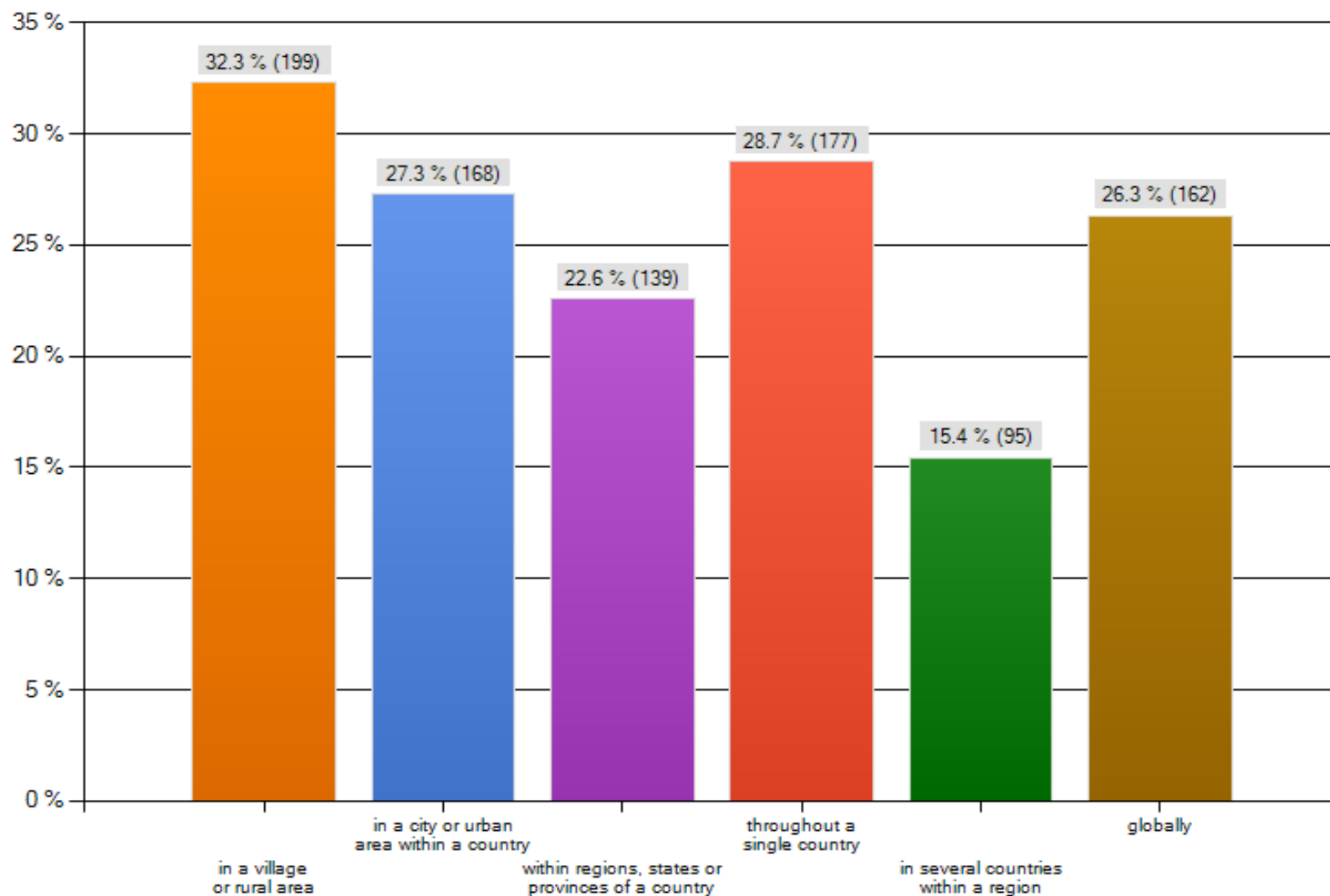
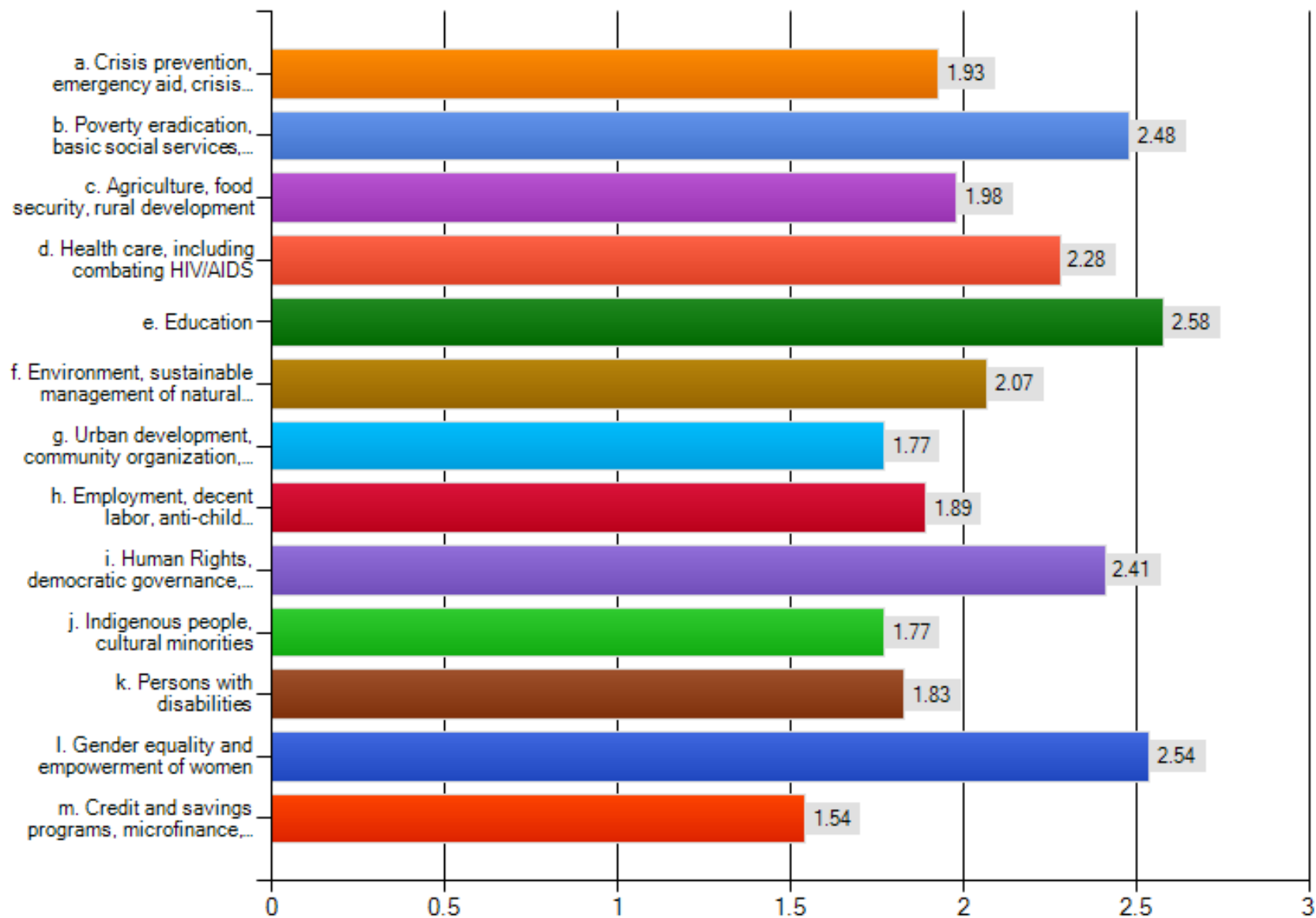


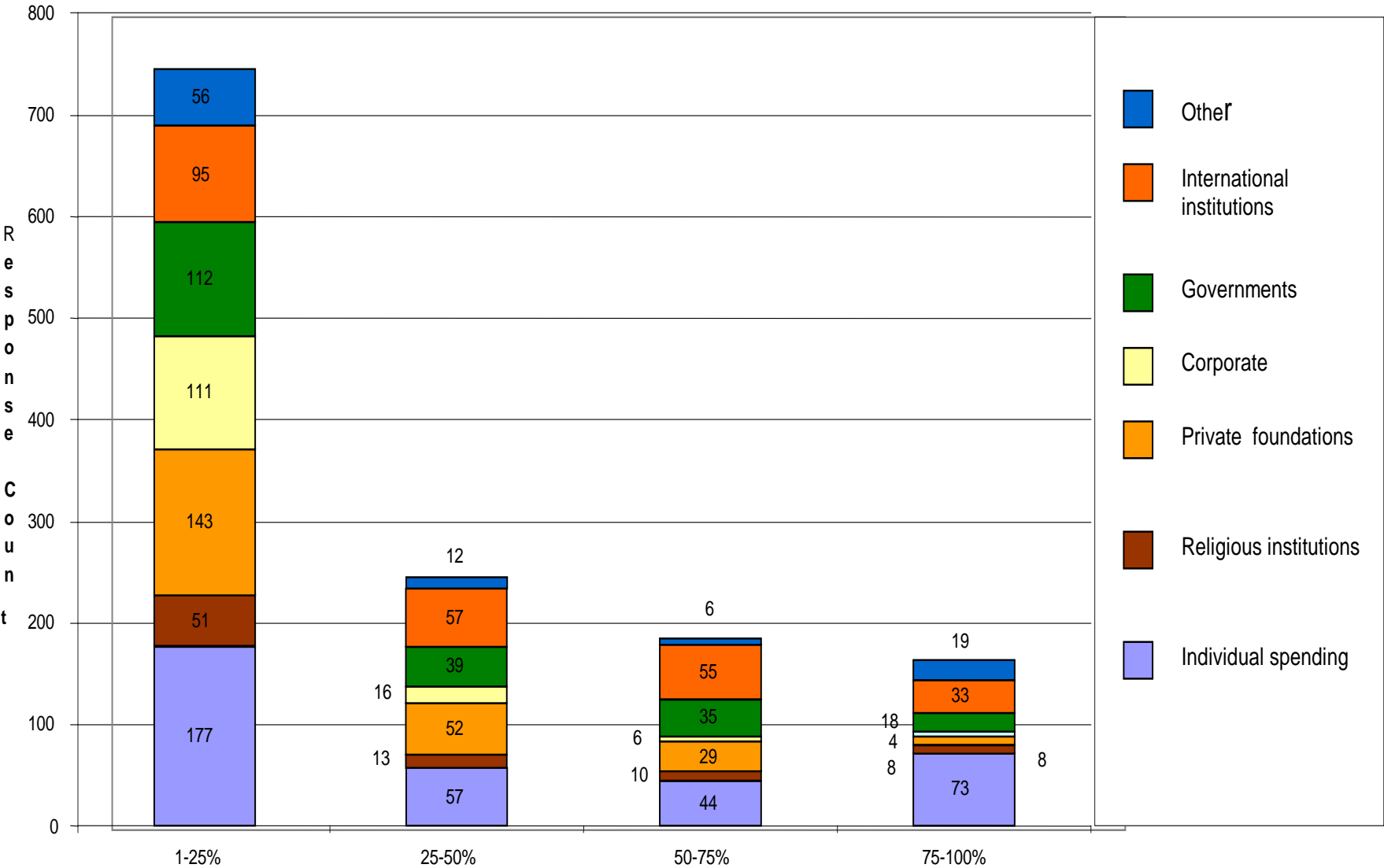
Chart Question 7: Fields of CSOs activities



### Chart Question 8: Main areas of activities

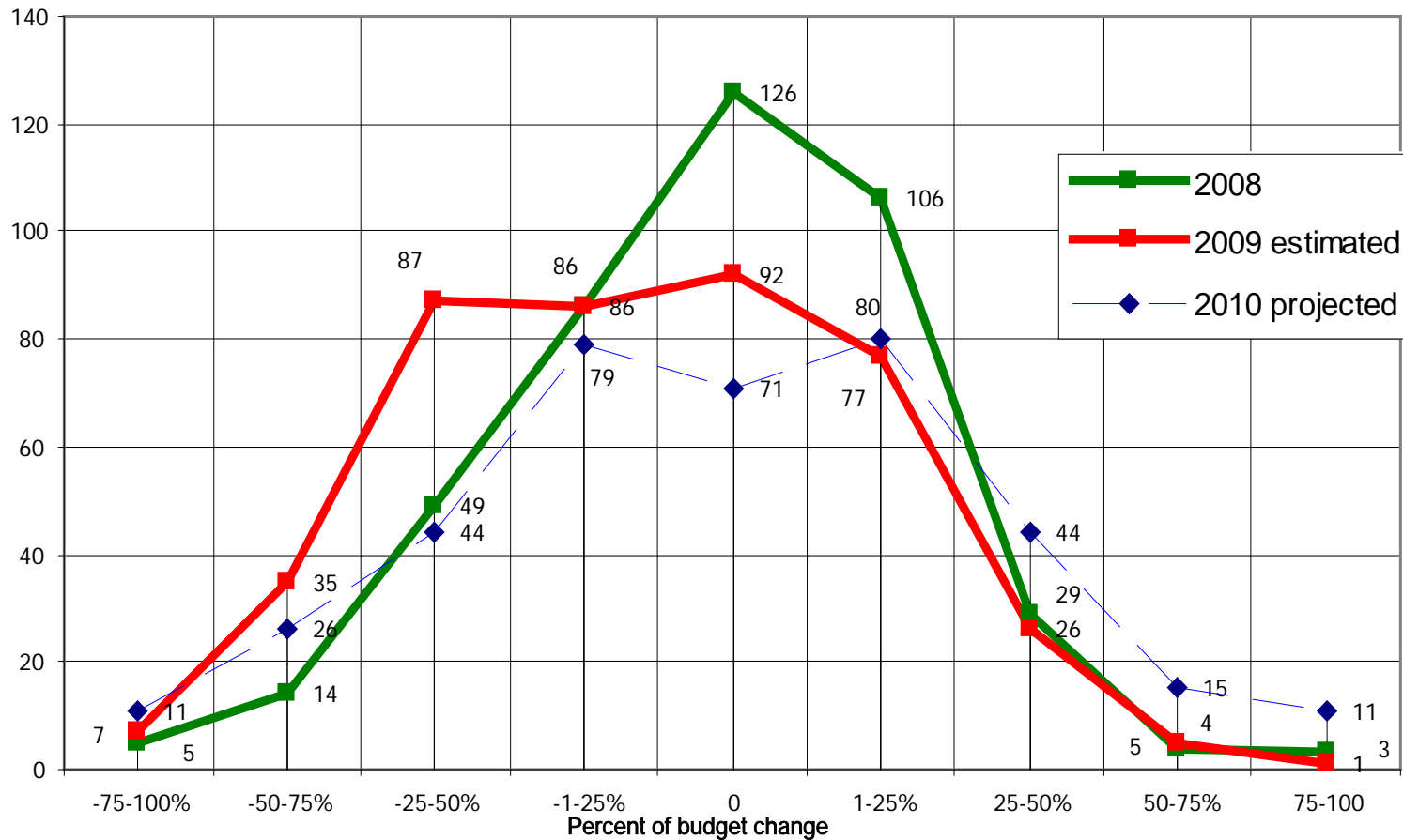


# Chart Question 12: Main sources of funding in all regions



# Budget change 2008 to 2010

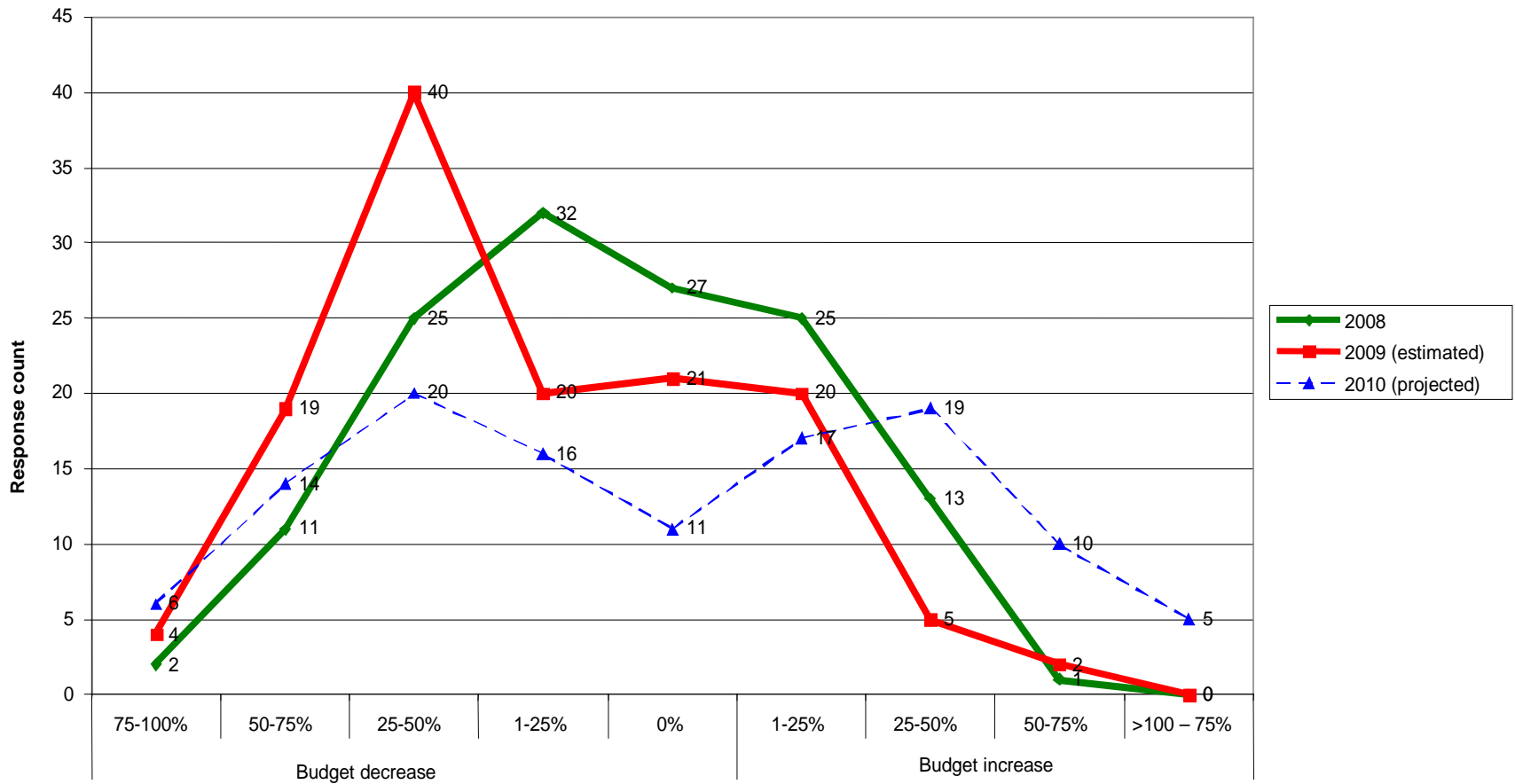
Chart Question 14: Budget change 2008 to 2010 (projected)





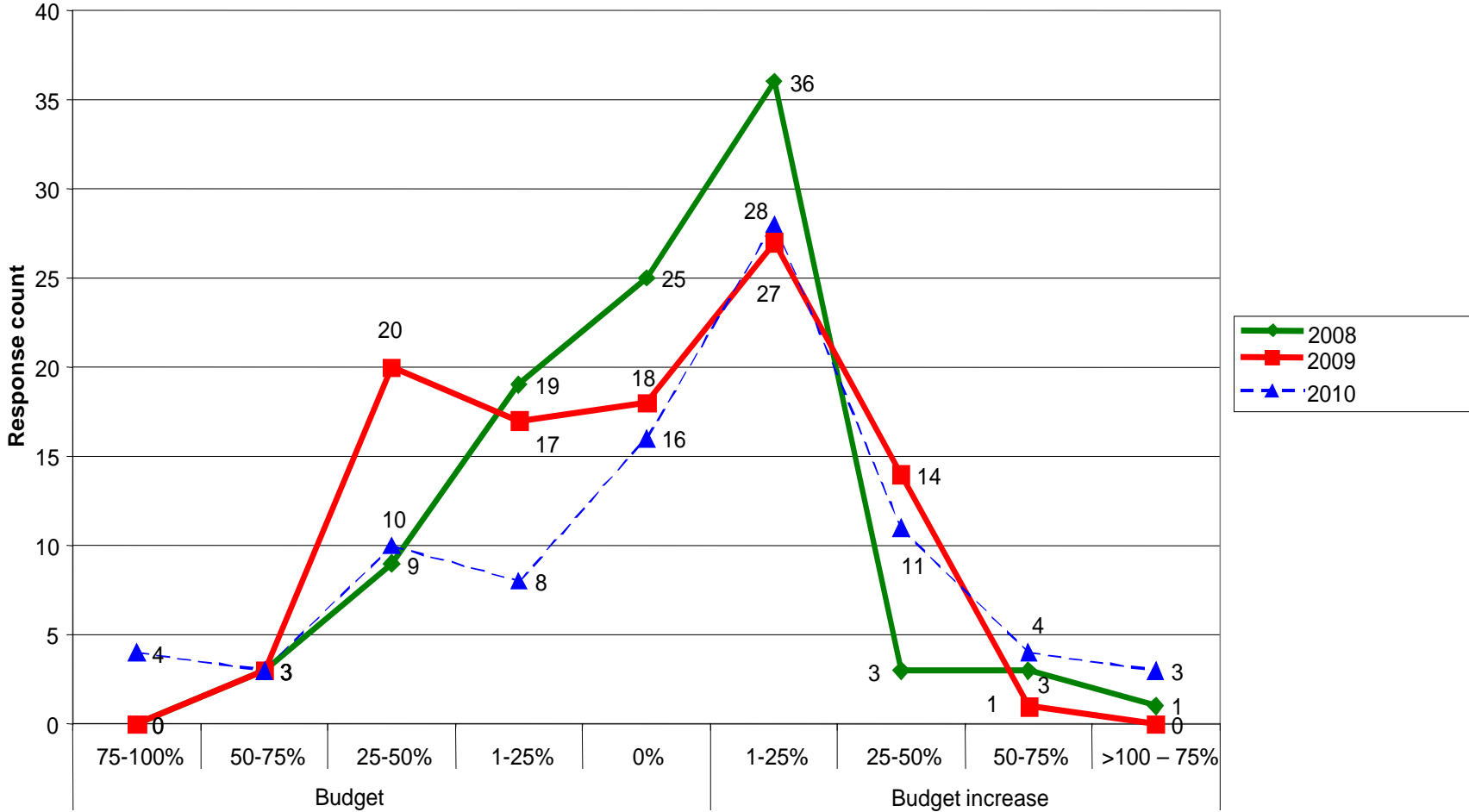
# Budget change in Sub-Saharan Africa

Chart Question 14: Change of budget in Sub-Sahara Africa



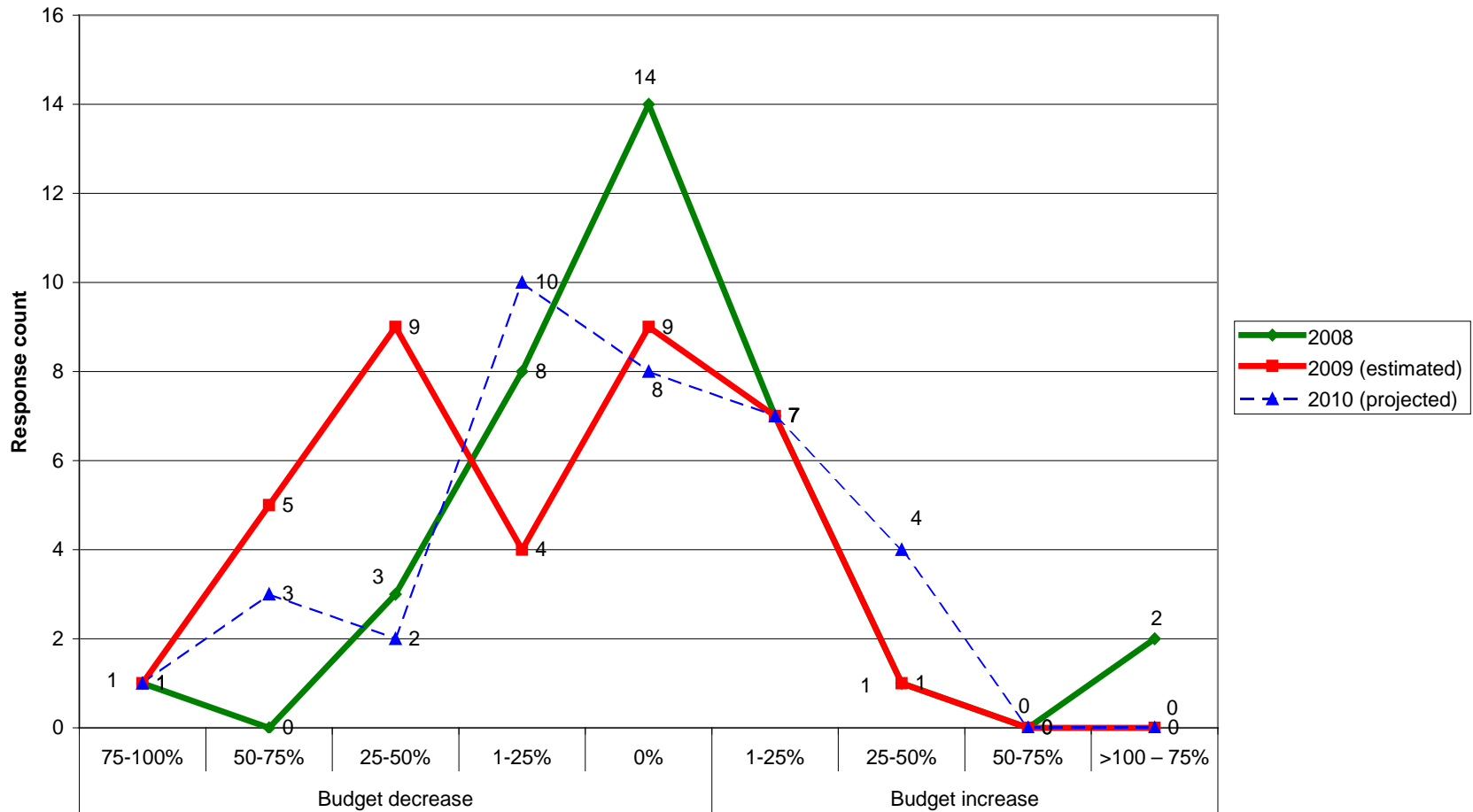
# Budget change in Asia

Chart Question 14: Change of budget in Asia, incl. China



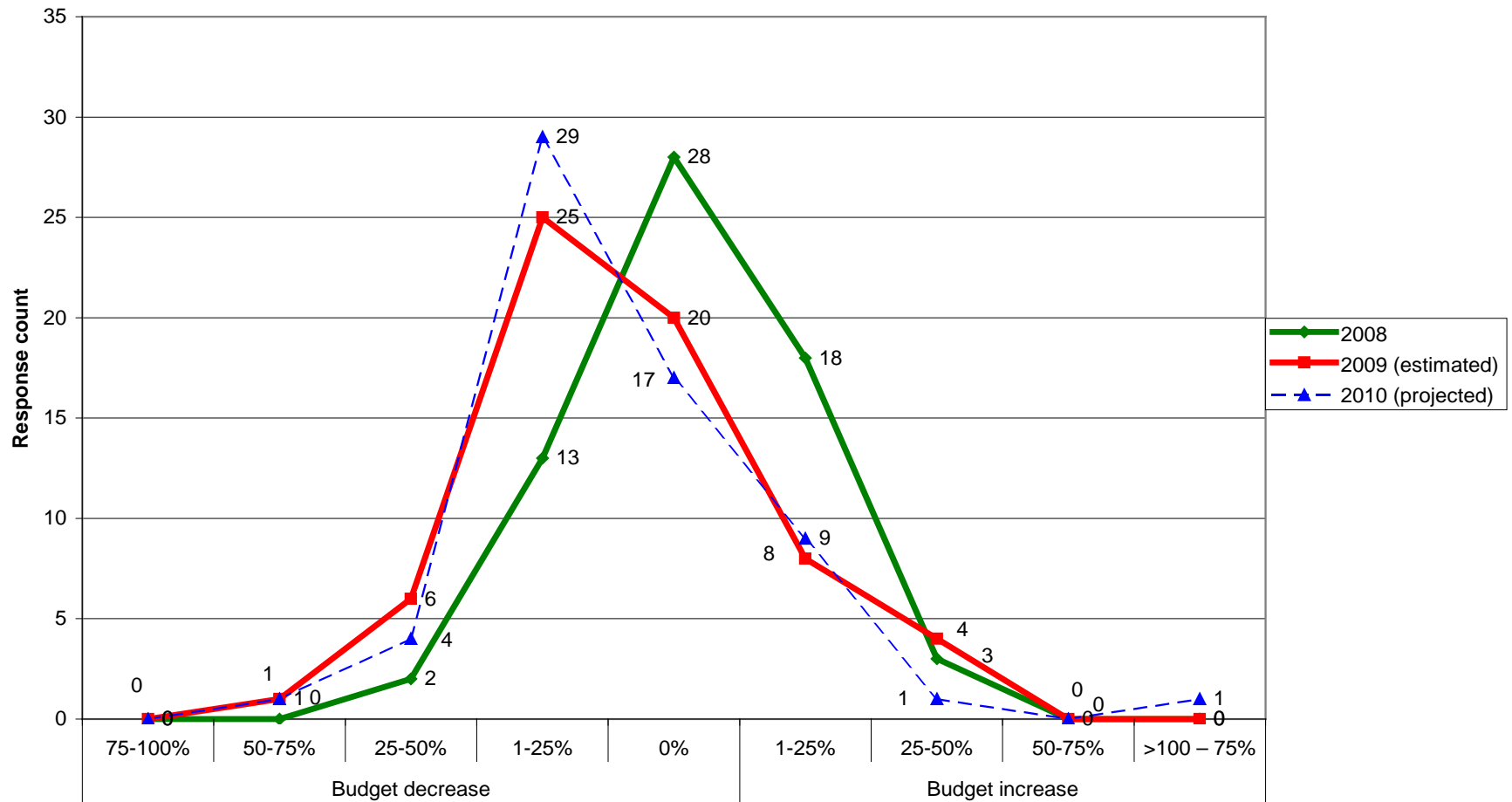
# Budget change in Latin America

Chart Question 14: Change of budget in Latin America and Carribbean



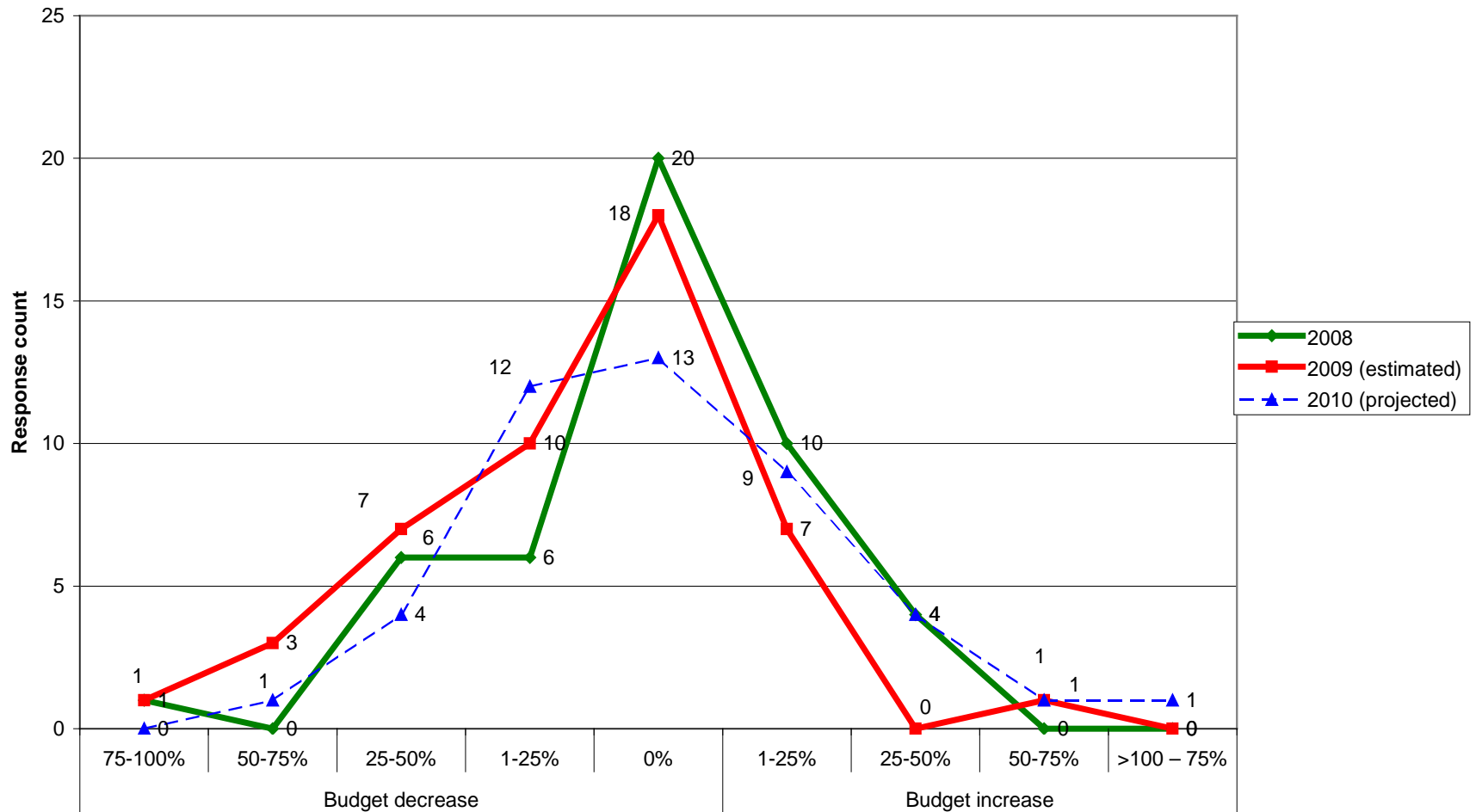
# Budget change in Western Europe

Chart Question 14: Change of budget in Western Europe



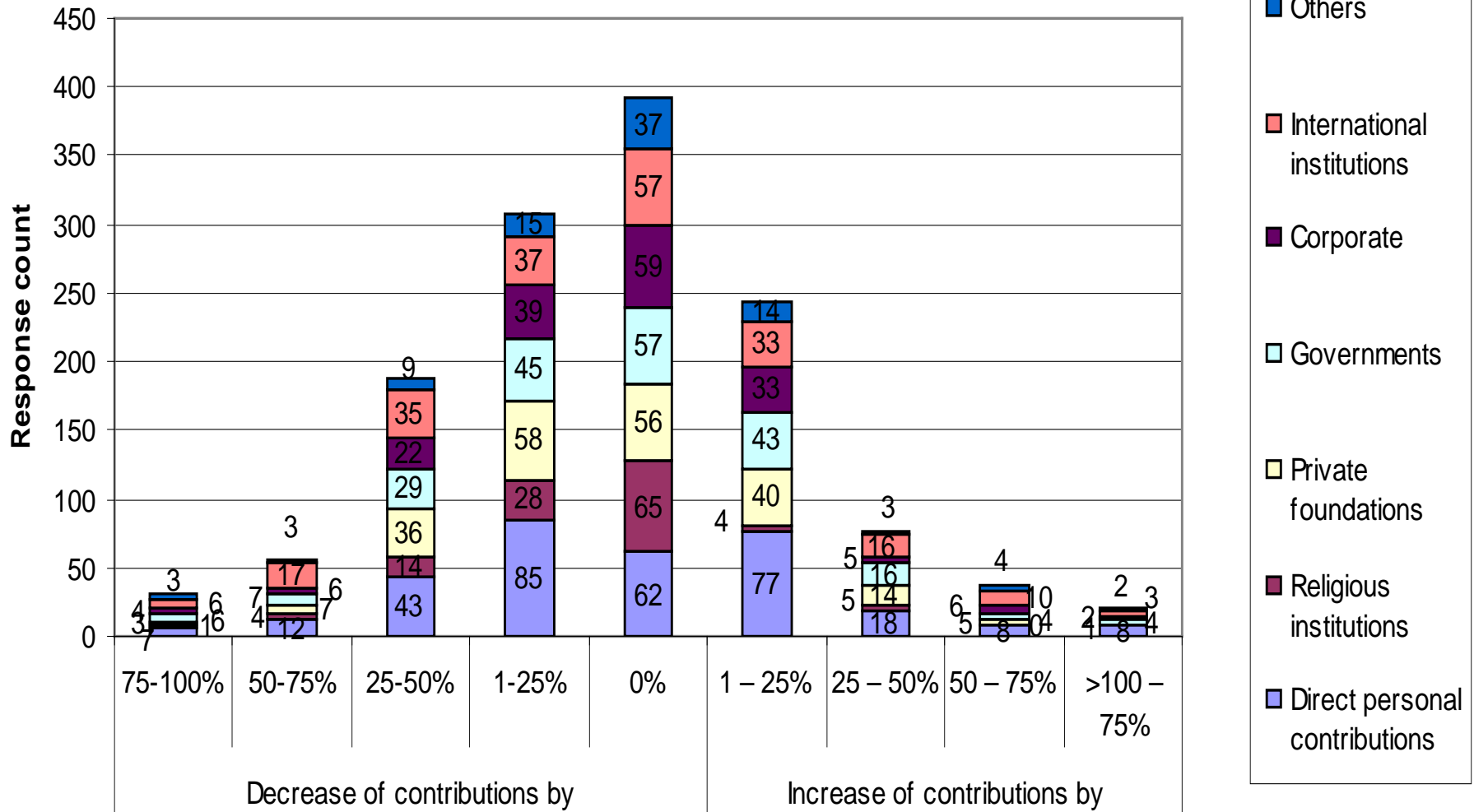
# Budget change in USA and Canada

Chart Question 14: Change of budget in USA and Canada



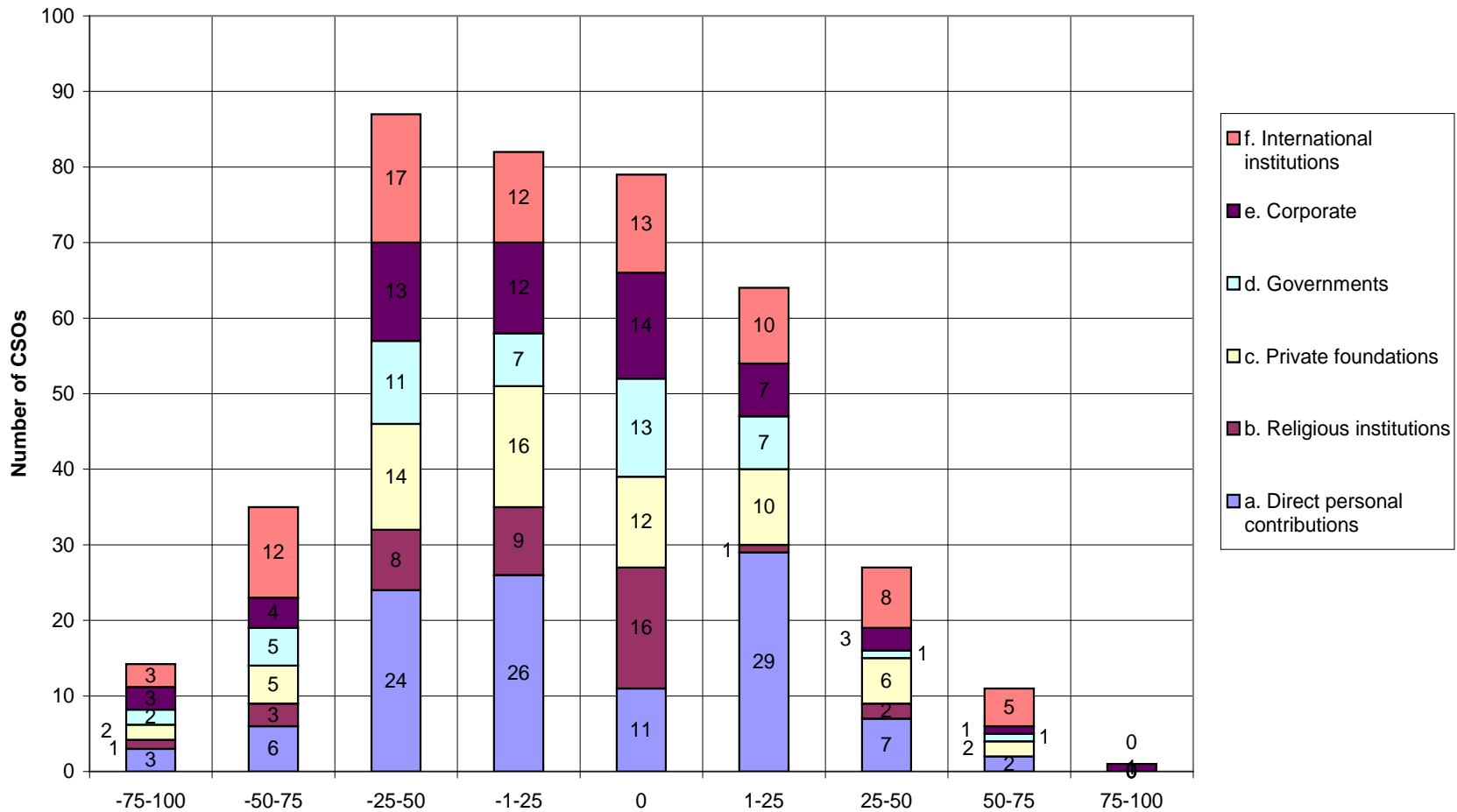
# Change of funding by source

Chart Question 15: Change of funding by source since 2006



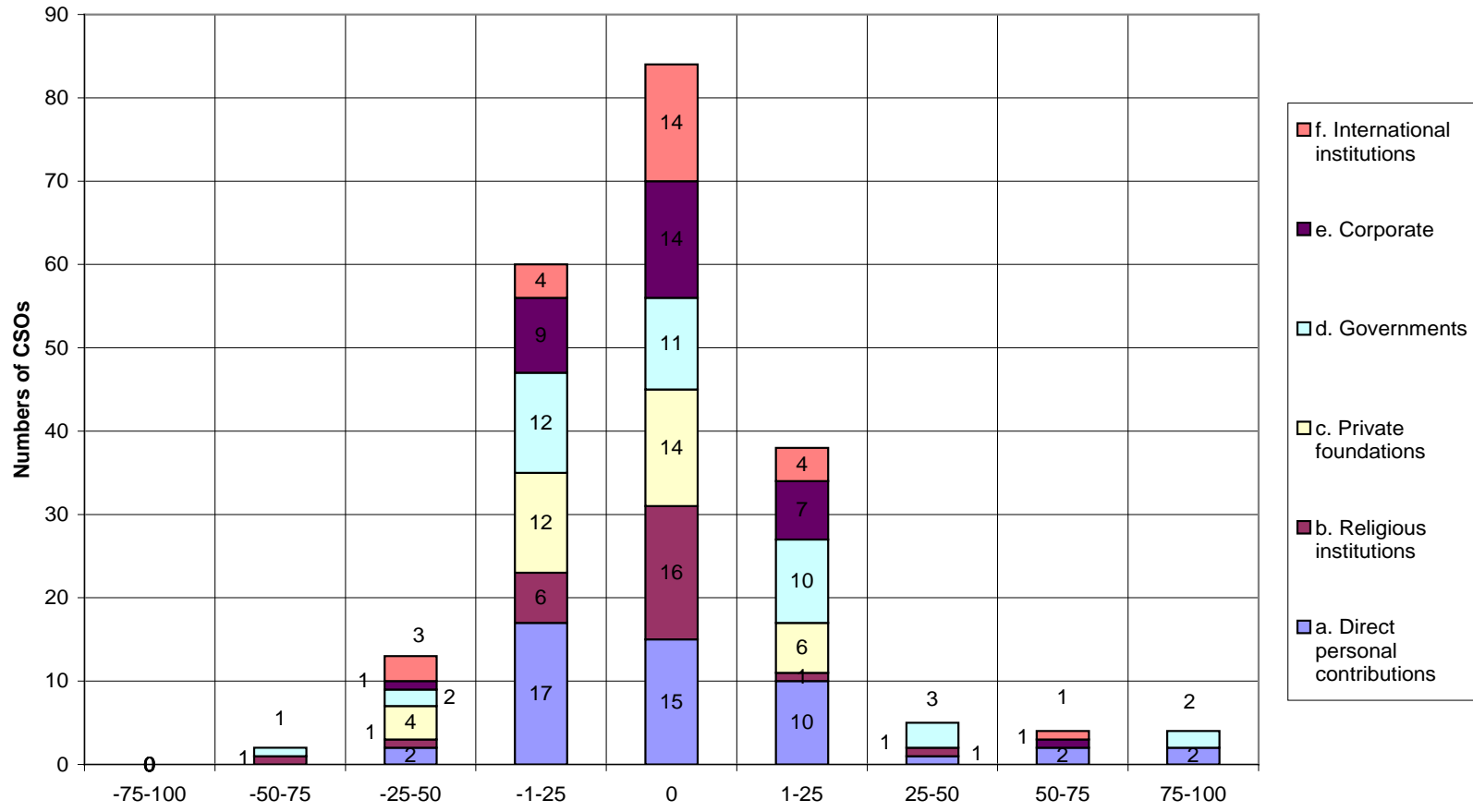
# Change of funding by source in Africa

Chart Question 15: Change of funding sources in Sub-Sahara Africa since 2006



# Change of funding by source in W.-Europe

Chart Question 15: Change of funding sources in Western Europe since 2006



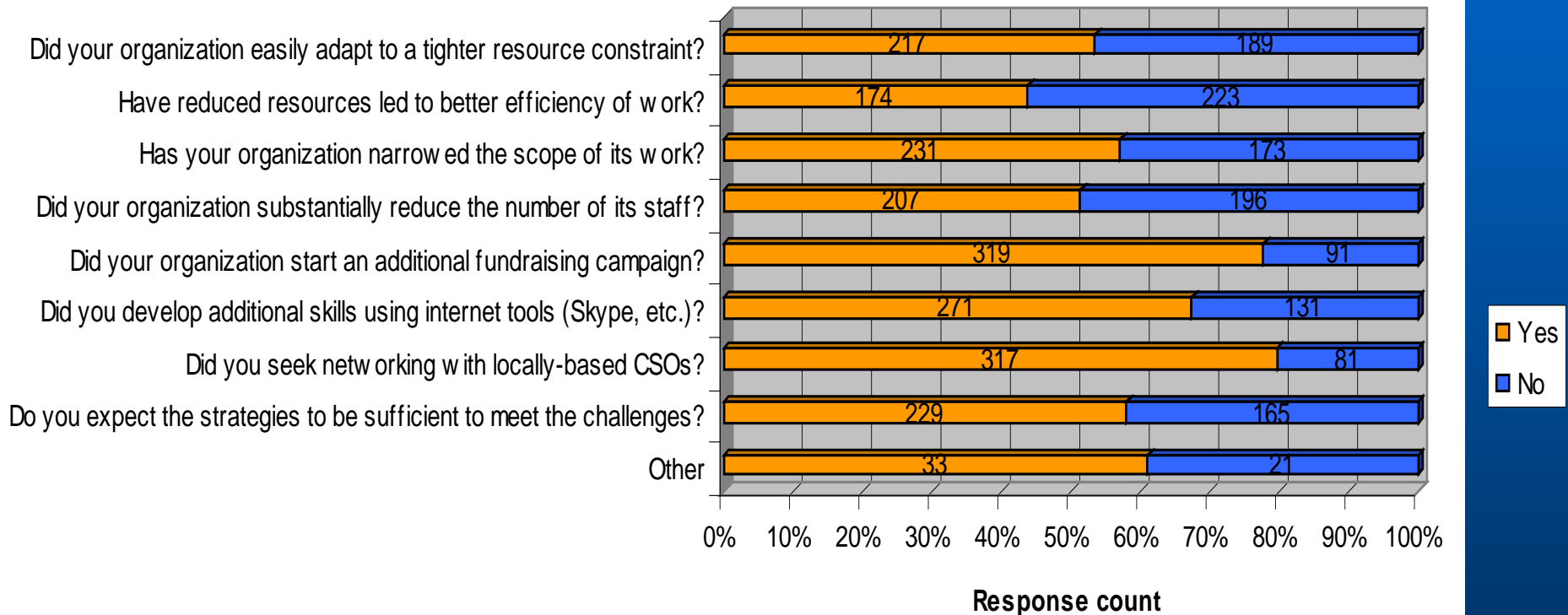


# Official Development Aid in crisis

- Official Development Aid commitments are usually adopted as (0.7%) ratio of gross national income (GNI).
- With the fall of GNI in many donor countries, aid budgets will automatically be reduced,
- while still maintaining the ODA/GNI ratio.

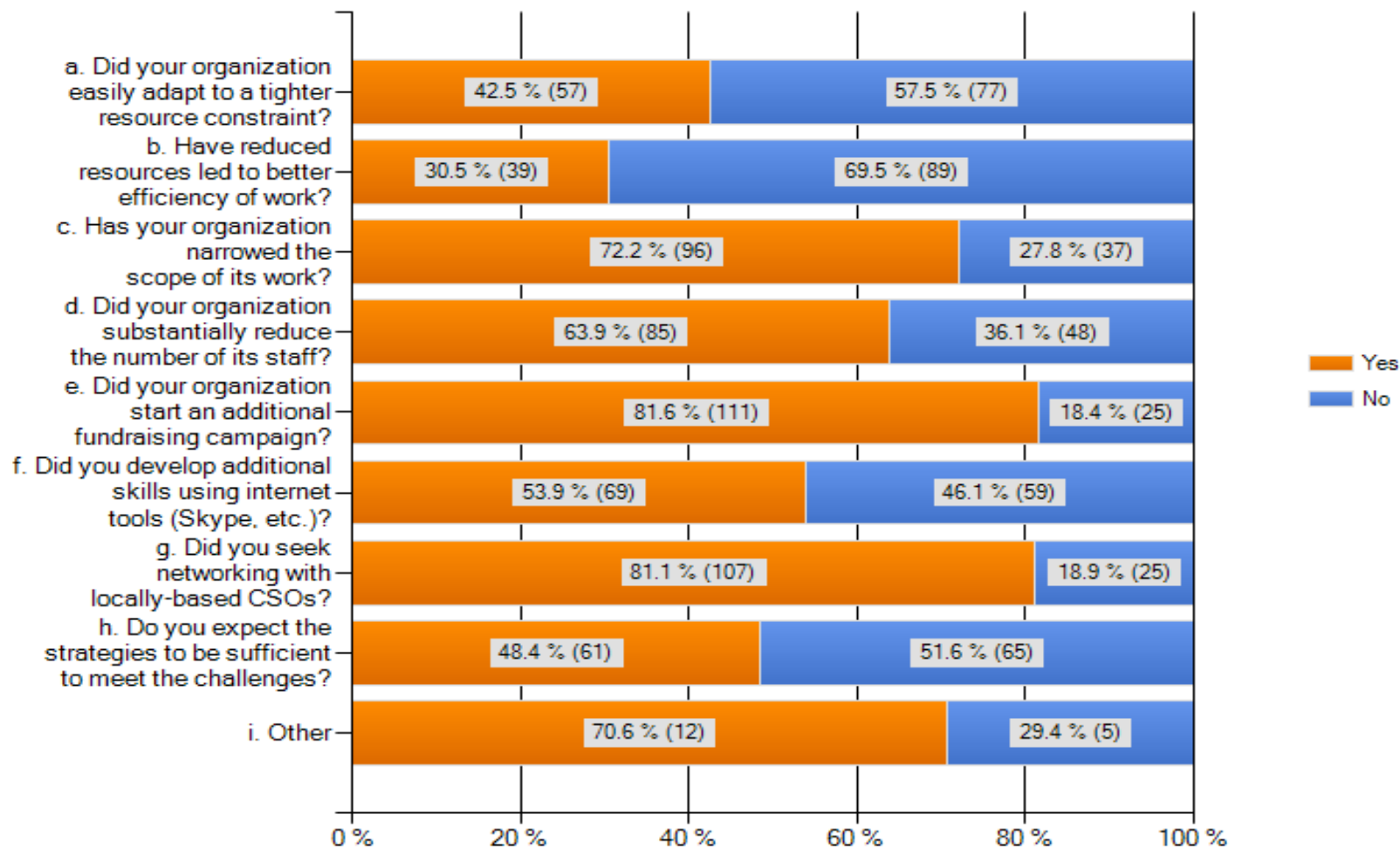
# CSOs' strategies

## CSO's strategies to cope with drop of revenues since 2006



# CSOs' Strategies in Sub-Saharan Africa

Chart Question 17: CSOs strategies in Sub-Sahara Africa to cope with drop of revenue since 2006



# Example from Sub-Saharan Africa

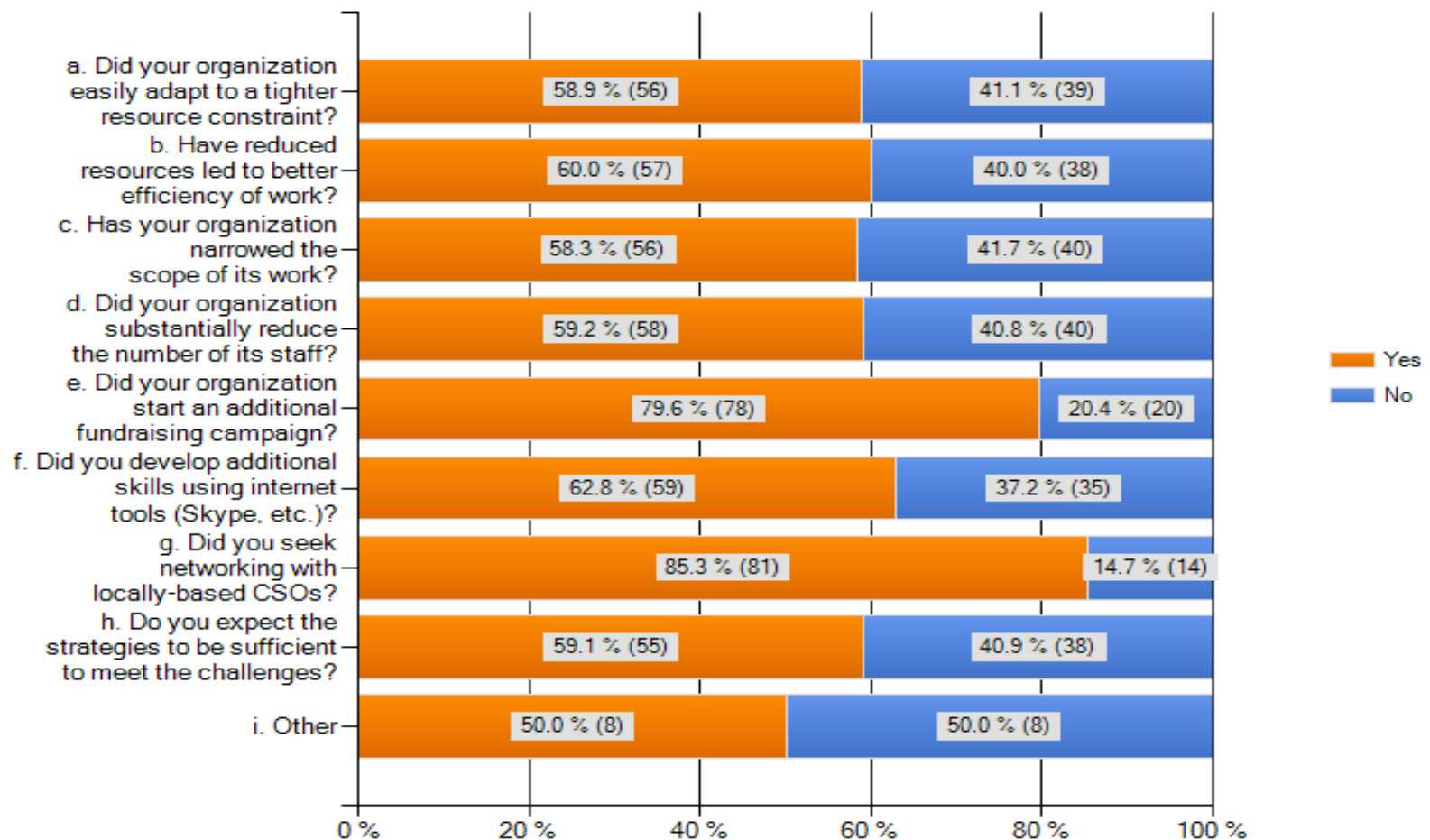
A CSO reported:

**“We still are only 2 full time and 4 part time staff working with 1,655 children in 70 different villages. The workload has increased, but we have not been able to increase staff ...**

**We could not further adapt because we were running at optimal efficiency prior to the crisis.”**

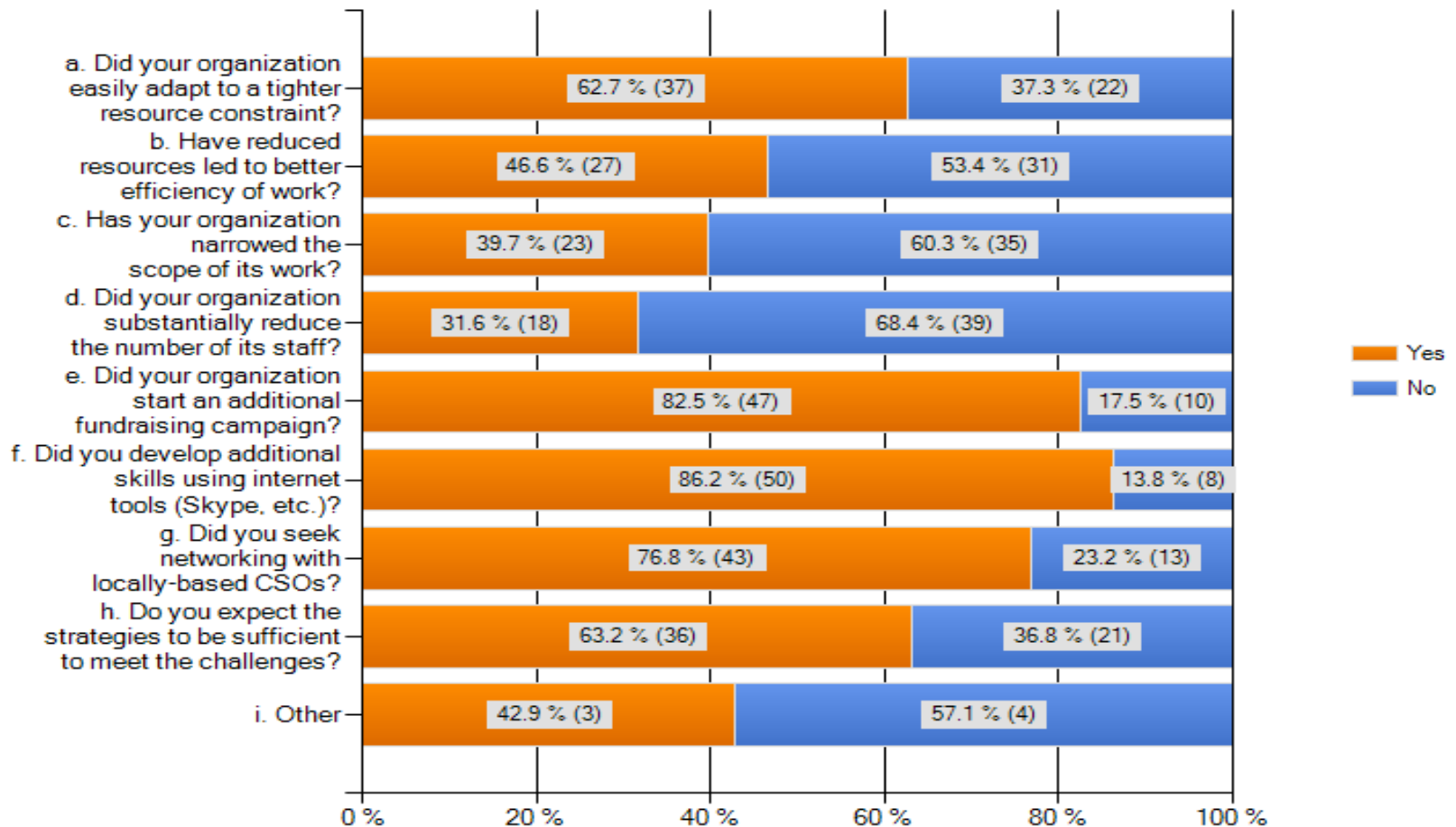
# CSOs' Strategies in Asia

Chart Question 17: CSOs strategies in Asia, incl. China, to cope with drop of revenue since 2006



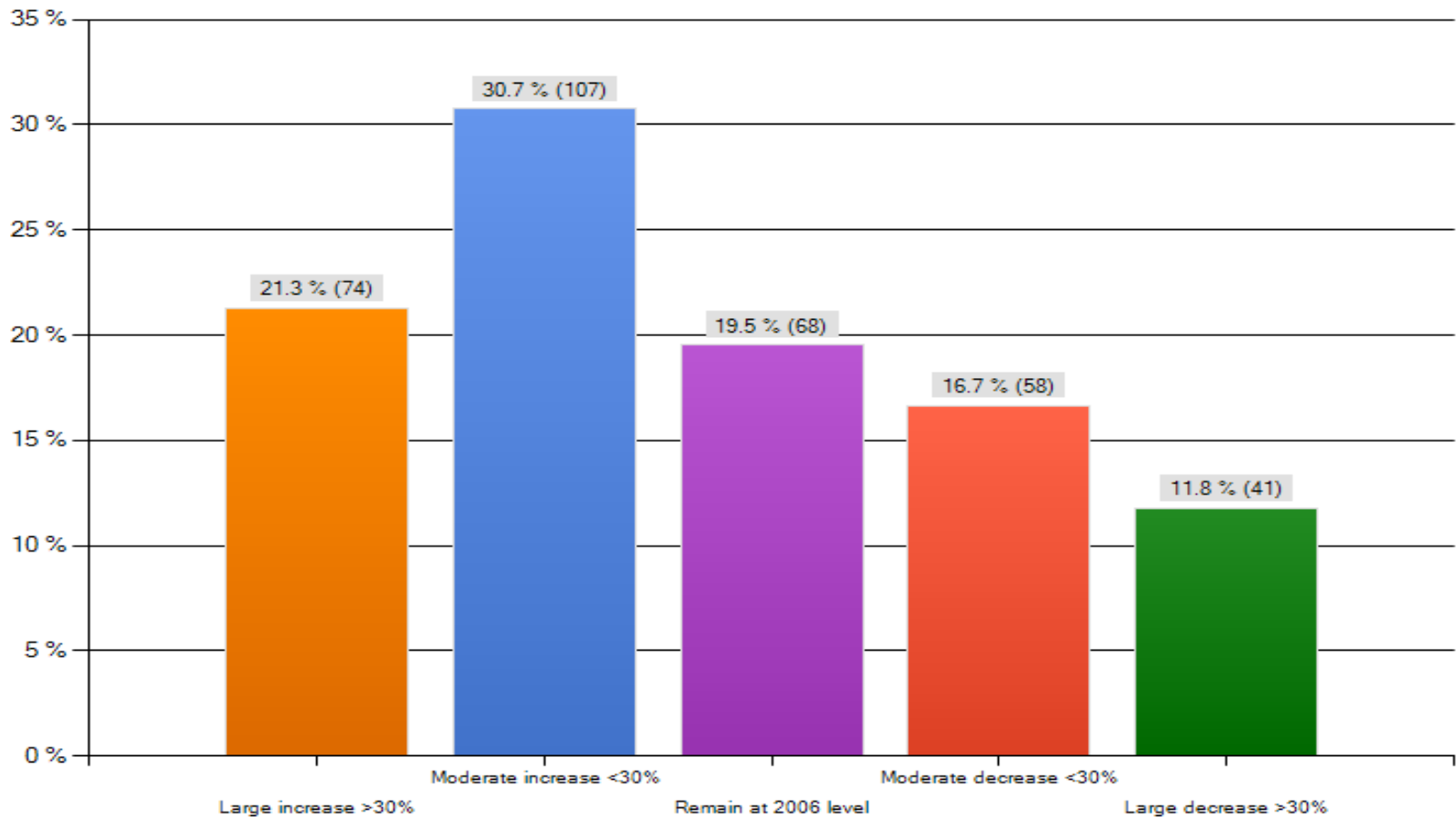
# CSOs' Strategies in W.-Europe

Chart Question 17: CSOs strategies in Western Europe to cope of revenue since 2006



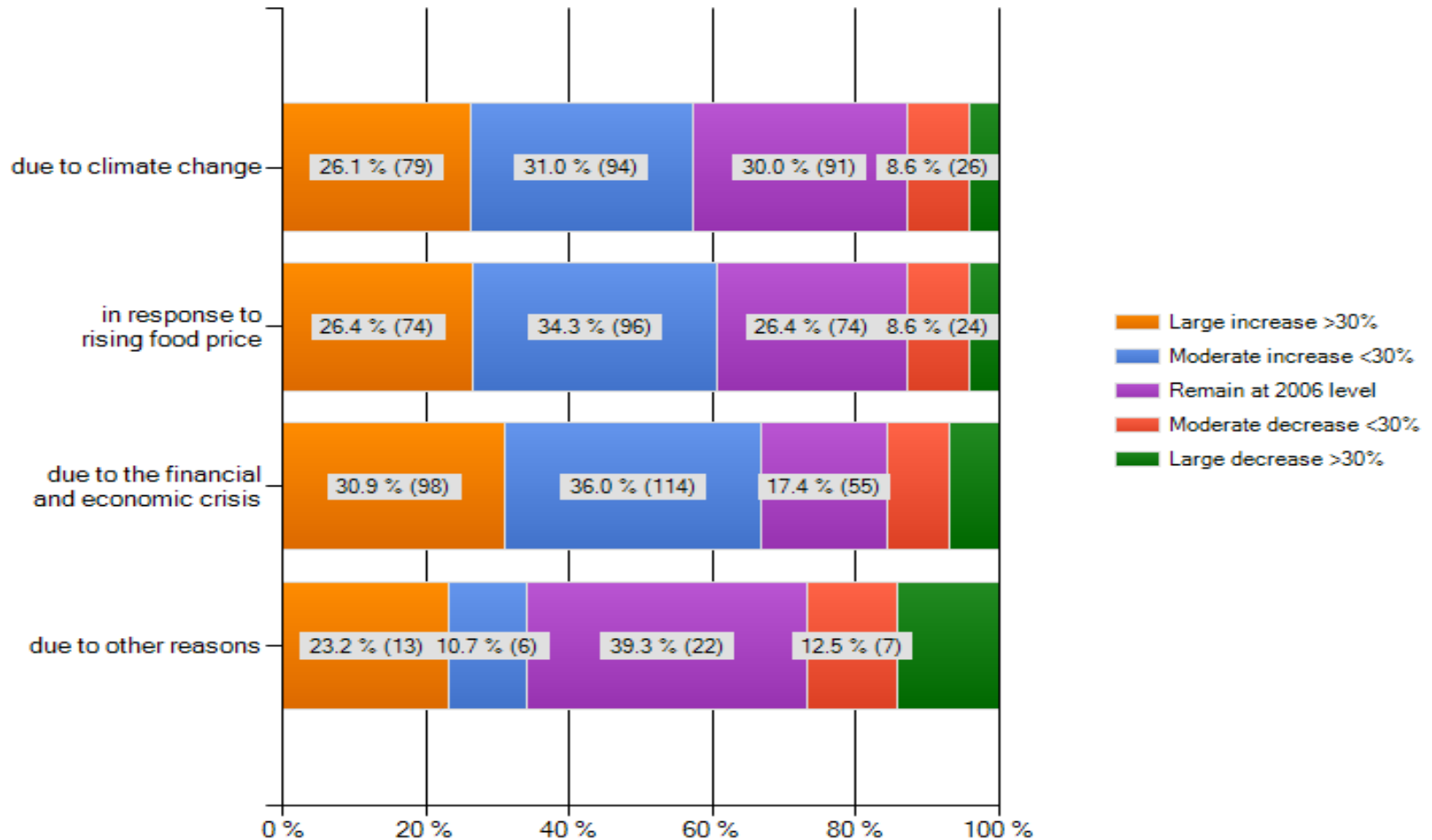
# Increase of demand for services

Chart Question 20: Change of demand for services since 2006



# Increase of demand due to

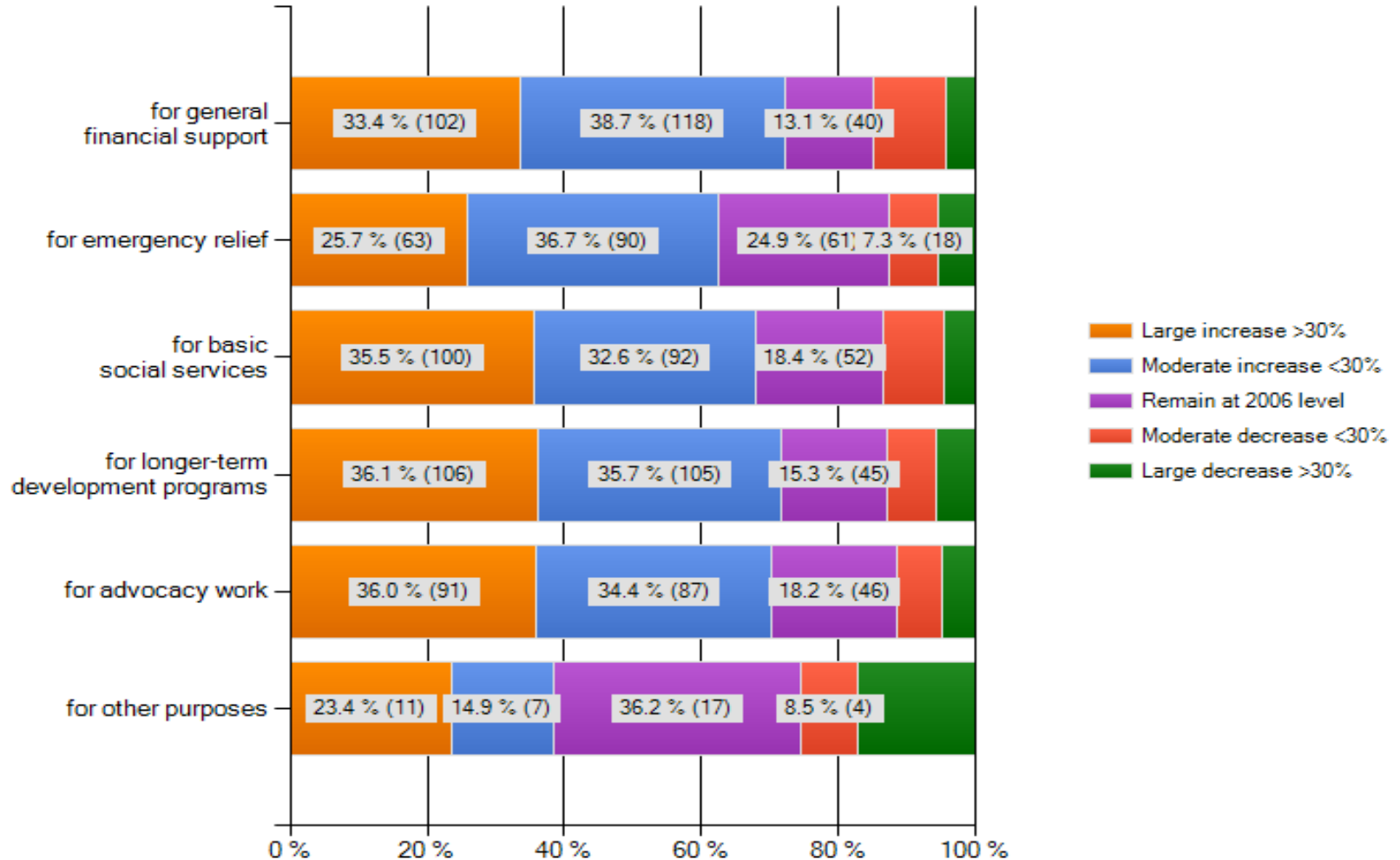
Chart Question 21 Change of categories of requests





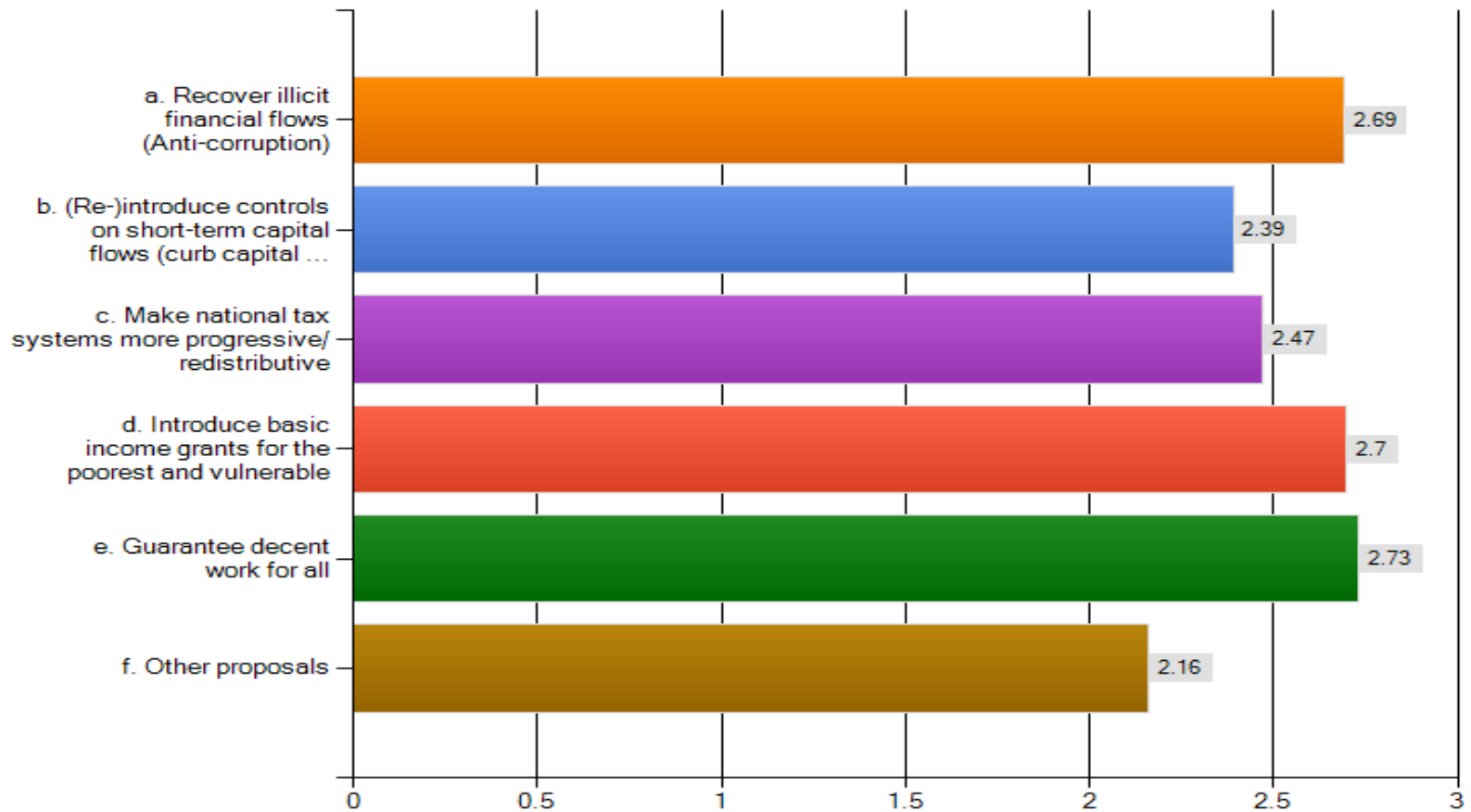
# Projected increase of demand in 2011

Chart Question 22 Projected change of requests 2010 - 2011



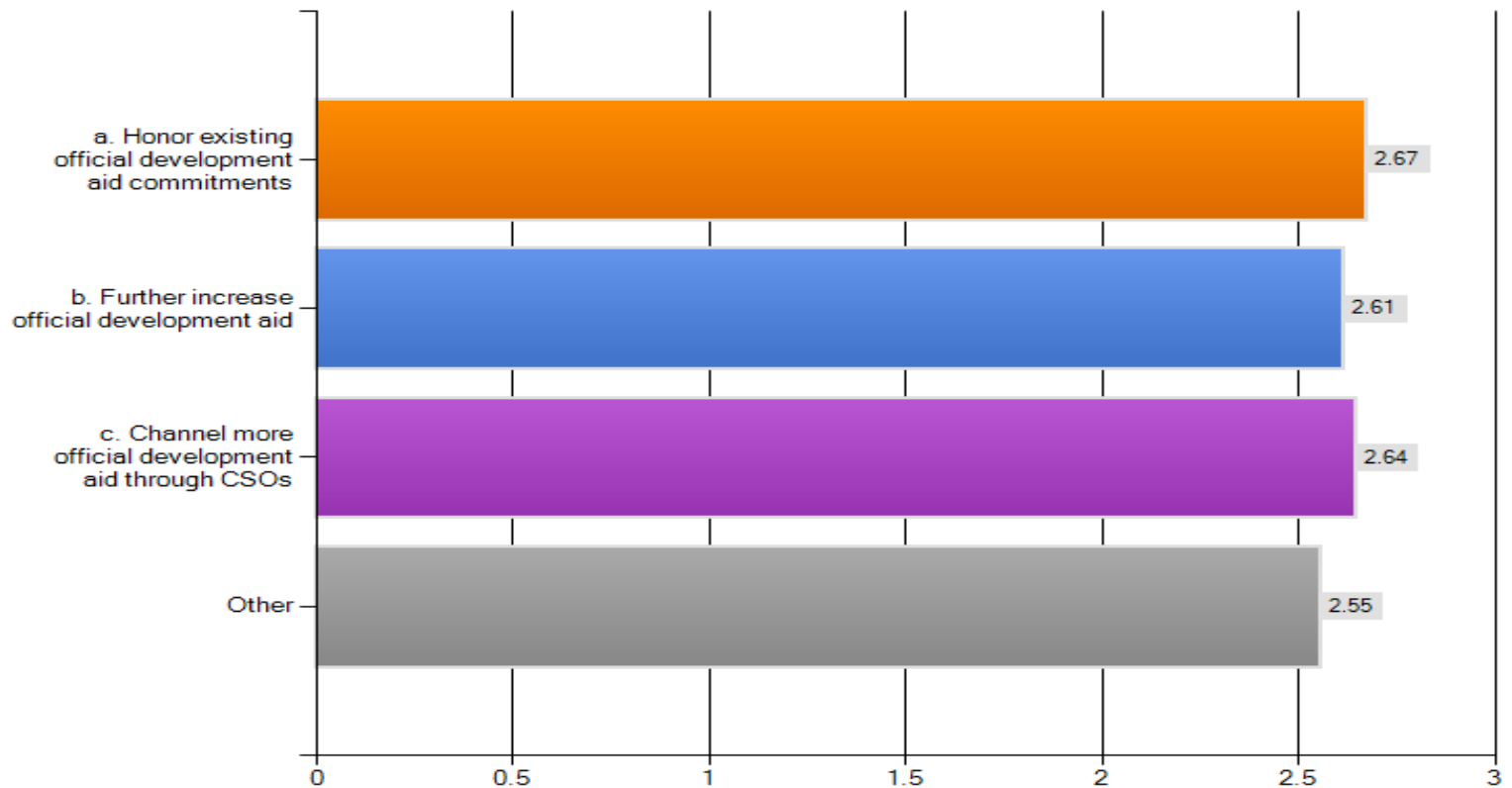
# CSOs' Recommendations

Chart Question 26: National Financial Resources



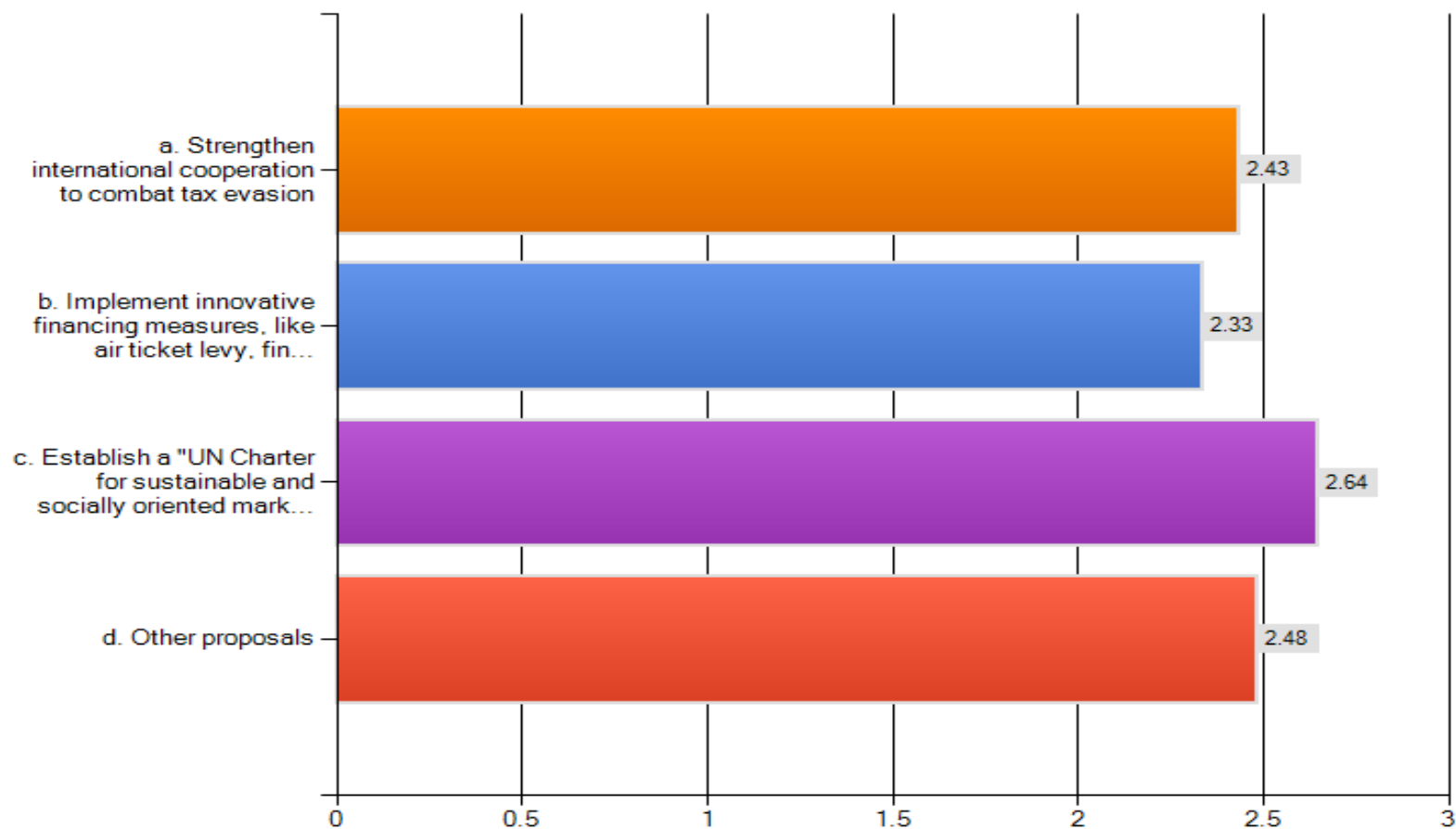
# Increase Official Development Aid

Chart Question 23: Official Development Aid (ODA)



# Measures at international level

Chart Question 27: Measures at international level



# The environmental, food and financial crises show

- **that simultaneous crises can occur and affect rich and poor around the globe.**
- **Given the high degree of global economic and financial integration, there are projections that in future, global crises may occur with increasing frequency.**

# It must therefore be a high priority on the political agenda

- **to take all necessary steps to avoid the social consequences of this present economic crisis,**
- **to slow and adapt to climate change,**
- **avoid another food crisis and**
- **prevent new financial and economic crises.**

In any case,

---

- **the world community should be better prepared and**
- **at least provide the financial means for “counter-cyclical” action.**

# During crises governments must step in

- **directly by increasing bilateral and multilateral support for the poorest countries and**
- **by supporting the necessary programmes of civil society organizations.**



**There is a need to institutionalize financial support for those in need**

**In order to assure stable and predictable funds:**

- **To address the social consequences of the crises and**
- **To avoid the harm to its poorest and most vulnerable members.**

# „Global Jobs Pact“ and “*Social Protection Floor*”

1. The International Labor Organization (ILO) initiated a „Global Jobs Pact“ to generate additional jobs during crises, and
2. All UN organizations proposed the establishment of a “*Social Protection Floor*” to protect affected people during crises and thereafter:
  - It would secure access to essential public services: water, sanitation, health and education.
  - It would provide essential social transfers to the poor to provide a minimum income.

# The question remains how to provide additional funds for such proposals

The most promising option favored by CSOs is the *Financial Transaction Tax* which would be established by national governments to tax transactions within their jurisdictions in all kinds of financial assets:  
shares, bonds, securities and derivatives.

It is expected that a tax rate of just 0.1% would yield globally 734.8 billion USD.

This PowerPoint presentation, an Executive Summary and the full Study are available at

<http://ngosocdev.wordpress.com/2010/01/28/174/>

# Thank you

Eva-Maria Hanfstaengl  
(hanfstaengl@freenet.de)

New York, 15 February 2010